

NETAN

Network controlled plant operation

General

NETAN connects machines and plants to Intra/Internet – networks. Messages from the plant can be shared over the network

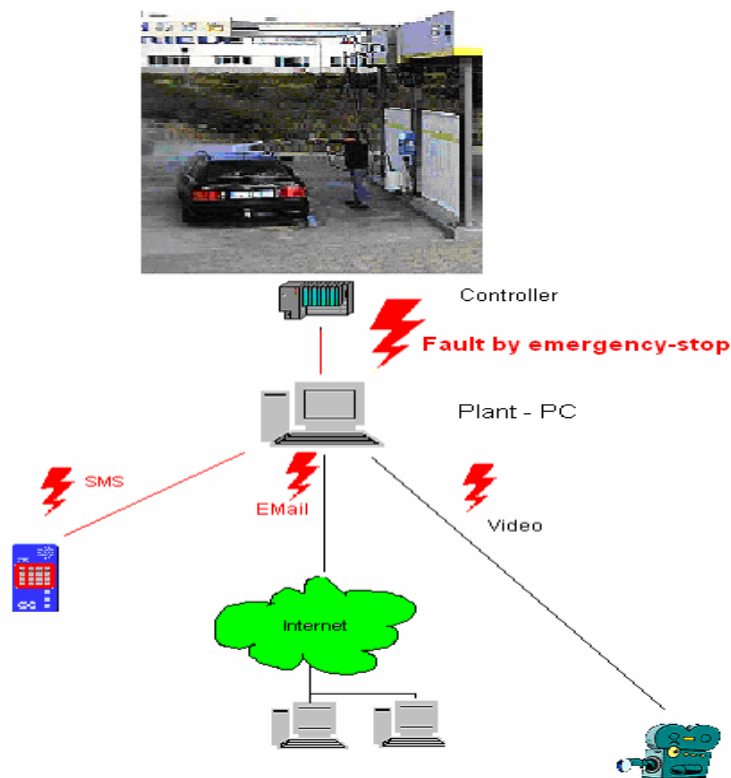
Your benefit

- You can increase the efficiency of your plant
 - by flexible access to the machine process
 - at the machine (local at the PC)
 - in the company (Intranet)
 - from external (Internet)
- You can minimize out of order times
 - You receive machine faults by E-Mail/SMS. So you can react faster to activate maintenance staff.
- Security
 - With the additional package „camera overview with long-time-saving“ you can protect sensible company-areas, and at the same time you’ll have a security of mischievous disturbance
- Flexibility und future orientation
 - NETAN is developed by SIS. We realize all possible costumer wishes.

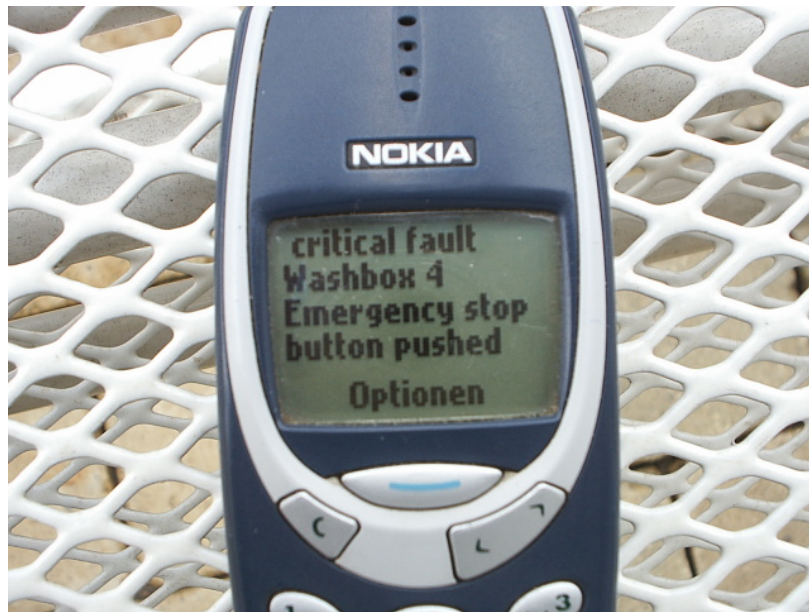
Possible applications

- Remote control from plants and machines
- Protection from plants, machines and objects
- Machine- und plantoperating
- Head functions in production processes

A typical machine fault



The PC sends a SMS/Email on incoming fault messages to your mobile phone



You can see active messages at every time via Intra-Internet.

Messages - Microsoft Internet Explorer

Adresse <http://www.ims-profiwash.com/EN/sonstiges.htm>

Messages

[Up](#) **Fault messages**

Navigation: [] [] [] [] [] [fault reset]

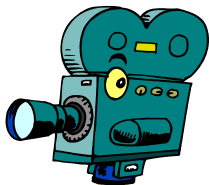
Group	Source	Origin	Incoming	Fault message	Gone
General	Washbox 4		27.02.2005 16:44:18	Fault air-pressure	27.02.2005 16:45:26
General	Washbox 4		18.02.2005 14:16:23	Emergency stop button pushed	18.02.2005 14:17:08
General	Washbox 4		17.02.2005 17:02:35	Emergency stop button pushed	17.02.2005 19:28:03
General	Washbox 4		16.02.2005 19:03:42	Emergency stop button pushed	17.02.2005 09:05:08
General	Washbox 4		16.02.2005 13:56:23	Emergency stop button pushed	17.02.2005 09:05:08
General	Washbox 4		16.02.2005 10:50:24	Emergency stop button pushed	16.02.2005 10:50:37
General	Washbox 4		14.01.2005 20:11:42	Emergency stop button pushed	14.01.2005 20:18:18
General	Washbox 4		14.01.2005 19:51:33	Emergency stop button pushed	14.01.2005 20:18:18
General	Washbox 4		14.01.2005 19:42:43	Emergency stop button pushed	14.01.2005 19:43:02
General	Washbox 4		20.11.2004 22:09:49	Fault air-pressure	20.11.2004 22:15:22

Start | Broschuere_EN - Micr... | Messages - Microsoft... | DE | 11:02

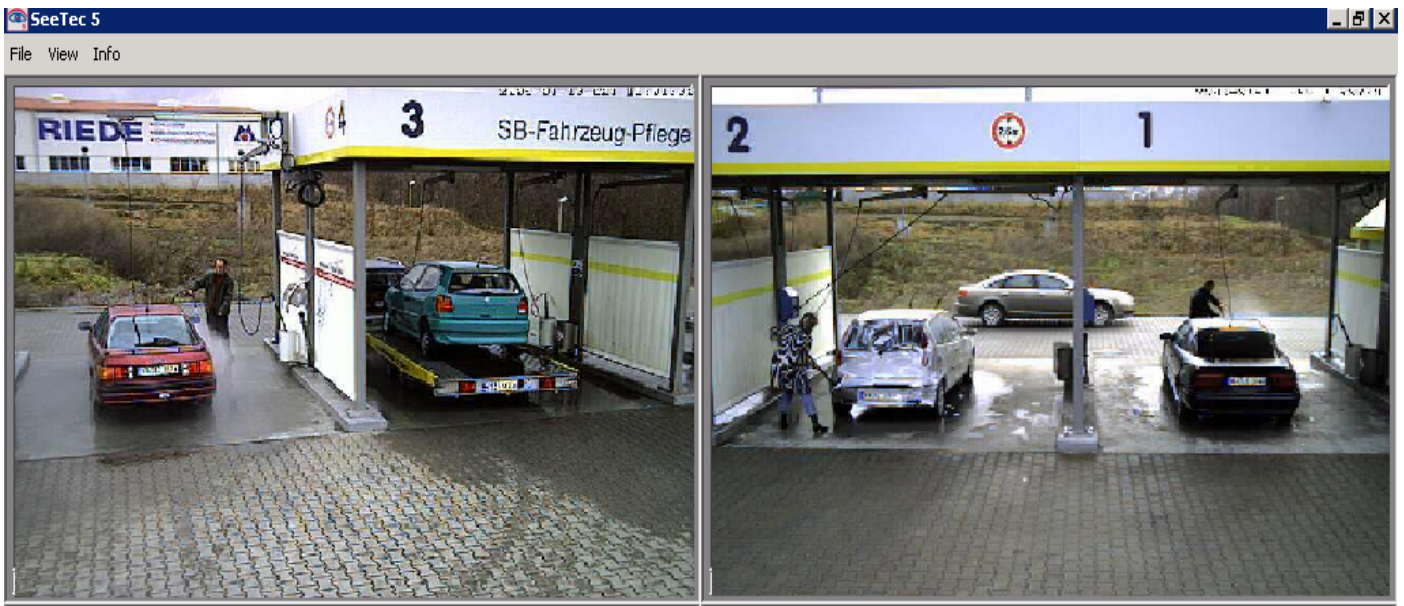


Additionally you always can have actual overview about the plant status.

Function	Carwash 1	Carwash 2	Carwash 3	Carwash 4	Plantroom
Enabled from Calendar	<input type="checkbox"/>	<input type="checkbox"/>	<input type="checkbox"/>	<input checked="" type="checkbox"/>	
Ready	<input checked="" type="checkbox"/>	<input checked="" type="checkbox"/>	<input checked="" type="checkbox"/>	<input checked="" type="checkbox"/>	<input checked="" type="checkbox"/>
Running	<input type="checkbox"/>	<input type="checkbox"/>	<input type="checkbox"/>	<input type="checkbox"/>	
Maintenance	<input type="checkbox"/>	<input type="checkbox"/>	<input type="checkbox"/>	<input type="checkbox"/>	<input type="checkbox"/>
Fault	<input type="checkbox"/>	<input type="checkbox"/>	<input type="checkbox"/>	<input type="checkbox"/>	
Detergent empty up to 70 %	<input type="checkbox"/>	<input type="checkbox"/>	<input type="checkbox"/>	<input checked="" type="checkbox"/>	
Detergent empty up to 100 %	<input type="checkbox"/>	<input type="checkbox"/>	<input type="checkbox"/>	<input type="checkbox"/>	



By camera overview with long-time-saving you can investigate the reason of a fault.



Software

By individual software modules we can implement your plant-PC to your special process environment. The following standard software is available.

Local at the plant PC

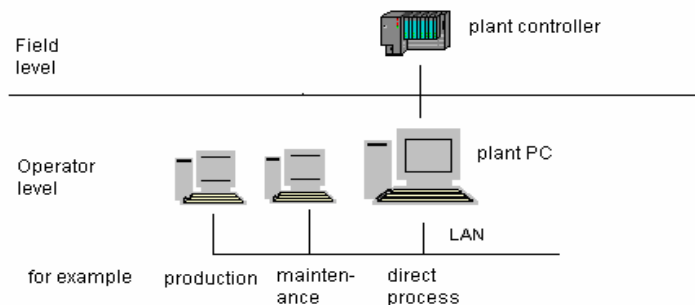
- Standard software „MMI Interface“ (**M**an **M**achine **I**nterface)
- Standard software „fault messages with Email/SMS – support“
- Standard software „camera overview with long-time-saving “

Published level and LAN

- Intra / Internet Websites with access to process data

Standardsoftware „MMI- Interface“

The standard software „MMI-Interface“ is used to get access to the plant controller. You can operate the plant by this software.



MMI Interface on a running machine.

Example from a Metro train wash-plant in Bangkok/Thailand. As shown different plant status, and possibilities of plant adjustment

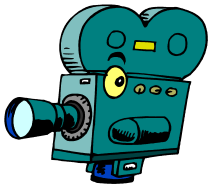
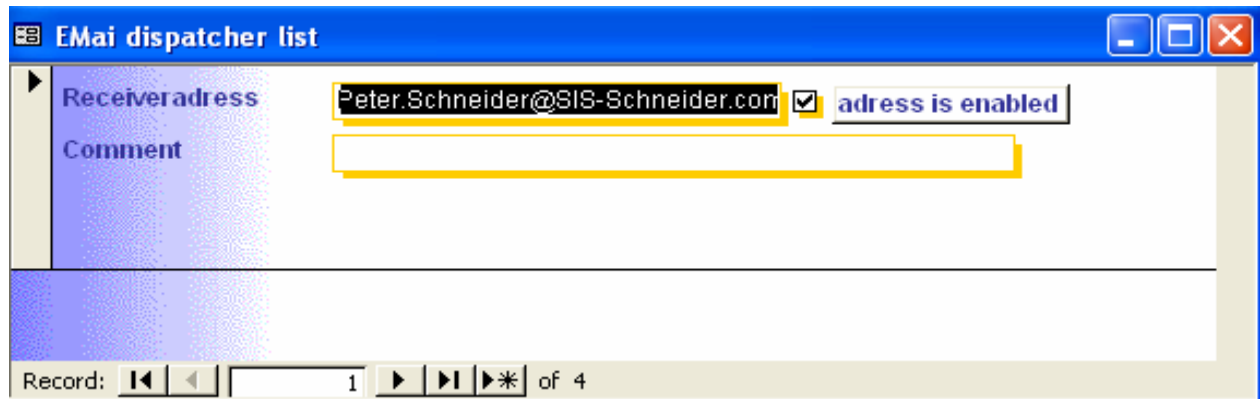
The screenshot shows the 'MMI-Interface [EWR3-3 MRTA Bangkok] - [Mainscreen]' window. The main display area features a central title box: 'Train Washing Plant Depot Controller Bangkok Metro Co. Ltd. bhb'. Below this, there are four main sections:

- Plant activation:** Contains 'Start' and 'Stop' buttons, a progress indicator for 'alkaline wash', and a vertical bar.
- additional functions:** Contains 'Homeposition' and 'Fault reset' buttons.
- machine status:** A list of status indicators with radio buttons: automatic mode, manual mode, program running, homeposition, and general fault.
- faults:** A list of fault indicators with radio buttons: power supply fault, emergency-stop button pushed, fault on washstations, fault on watersystem, chemicals less than 20%, and chemicals empty.



Standard software „Fault messages with Email/SMS support“

The standard software „ fault messages with Email/SMS support“ includes the detection of the fault messages and the dispatch of these messages to any defined addresses.



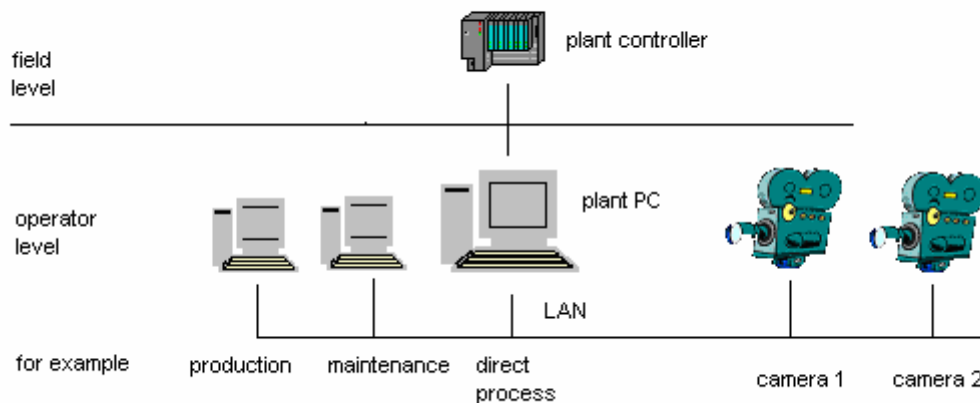
Standard software „camera overview with long-time saving“

The standard software „camera overview with long-time-saving“ includes

- Camera administration
- image saving to hard disk
- recorder function with playback from the saved images
- print functions

The live images from your plant can be seen with ordinary web browsers in LAN/WAN – networks.

Overview

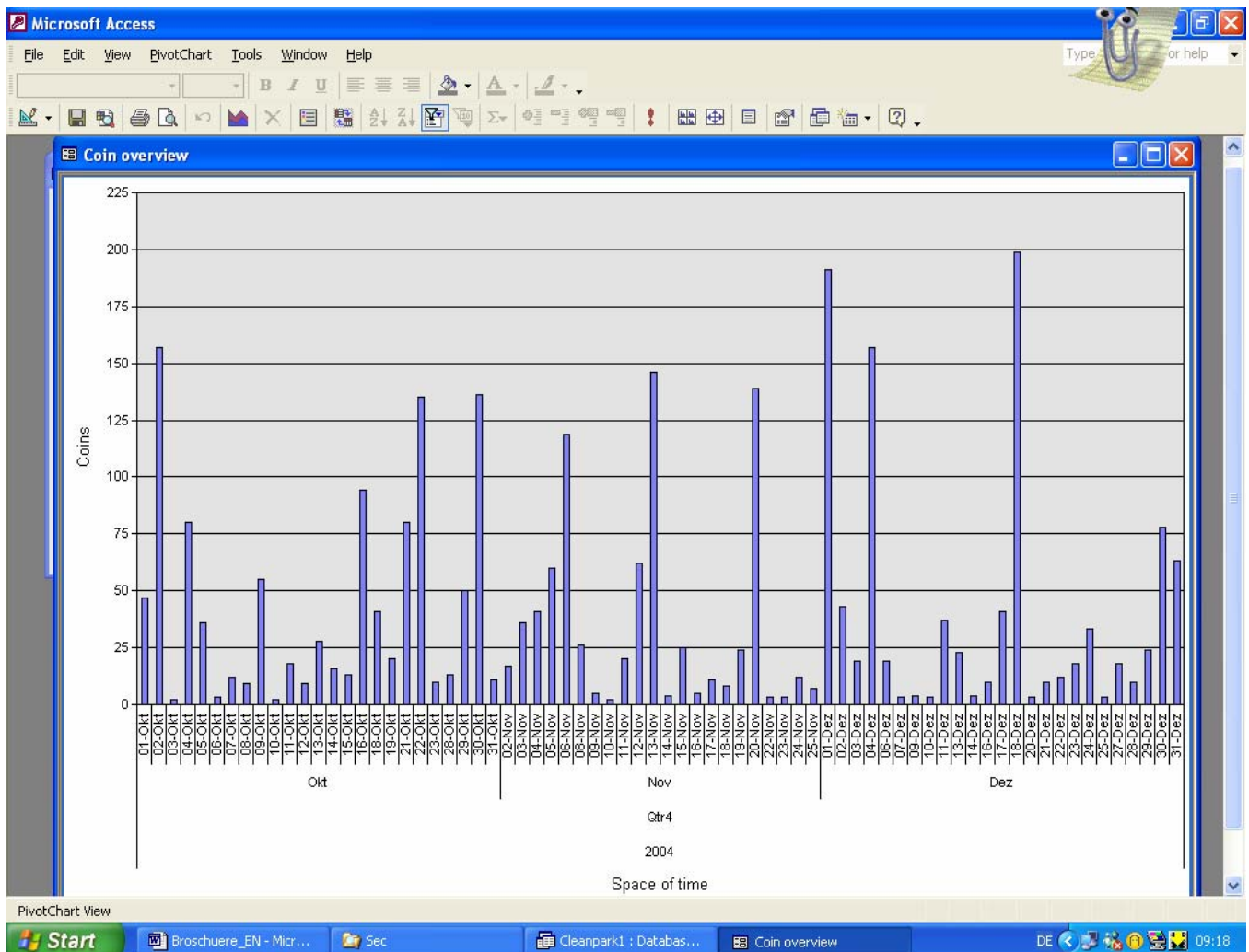


Flexible concept

We can bring the individual production data in your customer defined application.

- ✚ Website programming
 - Benefits:
 - programming and maintenance of 1 single PC
 - access via standard webbrowser
 - licence-free Client-PCs
 - administration by company internal IT - personal
 - company websites can be used for templates, to get a unique design
- ✚ Windows programming
 - Customer specific Win32 – applications
- ✚ Database - programming
 - development and integration from SQL-databases
 - programming of SQL - databases

Example of a coin counter application of a self service washplant . Every coin is detected with date and time. So you can have detailed information about the productivity of your plant.



Schneider
Industrielle Steuerungstechnik

S/S

A flexible, technology orientated service-company in controlling, with head office in D-73087 Boll Germany.

We can provide your control specific application

- Planning from the concept.
- Development from hardware
- Development from Software
- We commission the plants international
- We build the documentation

Schneider
Industrielle Steuerungstechnik

S/S

Sonnenbühl 1
D-73087 Boll
Germany

Tel.: +49 7164 9037596

Fax: +49 7164 9037597

Mobil: +49 171 4248974

Mail: info@sis-schneider.com

Internet: www.sis-schneider.com